

Legend

- Boundary Lines**
- Yuba County Airport
 - Proposed Fee Title Acquisition
 - Cities
 - City Sphere of Influence
 - County Line
 - Highway
 - Runway (6,006' length)
 - Future Runway Extension (994' length)
 - Parcels
 - River

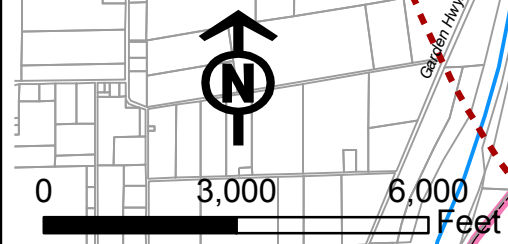
- ALUC Policy Boundaries**
- Review Area 1
 - Review Area 2
- } Airport Influence Area

- Safety Zones**
- Zone 1 (Runway Protection Zone)
 - Zone 2 (Inner Approach/Departure Zone)
 - Zone 3 (Inner Turning Zone)
 - Zone 4 (Outer Approach/Departure Zone)
 - Zone 5 (Sideline Zone)
 - Zone 6 (Traffic Pattern Zone)

Notes
See Section 3.2 and Table 2 for criteria applicable in each zone.



**Yuba County Airport
Land Use Compatibility Plan
(Adopted March 2011)**



Base Map Source: Yuba County Planning Department